



# CX450PRO-TT

V3 Torque Tube Version  
Kit Helicopter

# INSTRUCTION MANUAL



[www.copterx.com](http://www.copterx.com)

This is a product of



**KY Model Company Limited**  
[www.ky-model.com](http://www.ky-model.com)

Copyright © 2008-2010 KY MODEL Company Limited.

## WELCOME TO COPTER X RC MODEL GUIDE



Thank you very much for buying a COPTER X 450 PRO version 3 RC product. In order to be able to use this product safely, please read this manual before flying the helicopter. Please fly the helicopter safely observing all rules and manners after having fully understood the flight precautions, the unit's capabilities, and the best way to fly it. Be sure to retain the manual for future reference, routine maintenance, and tuning.

### IMPORTANT NOTES

- This helicopter is recommended for skilled intermediates and advanced RC helicopter flyers.
- Make sure to read and follow all the instructions in this manual, including all accessories.
- Should any problems arise, please confirm with an experienced RC helicopter personnel / instructor before introductory flight.
- Always find an experienced and / or qualified personnel / instructor for per flight inspection.
- Make sure flight vicinity is in an open space; free of crowds, obstacles, and buildings. Failure to abide may cause accidental and potentially hazardous encounters.
- Introductory flight should incorporate only the basic maneuvers (hovering, linear movements), until stick feel is mastered.

### SAFETY NOTES



Locate an appropriate location :

R/C helicopters fly at very high speeds, thus posing a certain degree of danger. Choose an appropriate location. A clear large room such as a Gymnasium, basketball court, warehouse. Do not fly the model on residential or commercial places such as near houses or buildings. Do not fly near electrical poles or high voltage cables that may cause radio interference. Do not fly model on inclement weather such as rain, wind if snow.

Acquire the assistance of an experience pilot:

Before starting up the model it is best that it is checked by someone that is experienced with this models, Parts checking prior flight is mandatory. On the flying field before actual power up of model and transmitter make sure the no other pilots have the same frequency. Frequency interference can cause your model and other model of same frequency to crash.

For first time pilots its highly recommended that you use a simulator (Computer based flight simulator) for enhancement of flight skills

Aware of moving parts:

During actual operation of the helicopter, the main rotor blades will be spinning at a very high rate of speed. The blades are capable of imposing serious bodily injury and damage to the environment. Be careful on body parts such as hand, eyes, arms. Also be cautious of loose clothing, can be sucked up by the rotating blades.

Do not turn your away you eyes when the model is turned on or in use. Never leave the model unattended. Immediately turn off the model and transmitter after use.



## SAFETY NOTES

**CX450 Pro**  
Kit

### PREVENT MOISTURE



R/C models are composed of many precision electrical components that is sensitive to moisture and water. Keep away from water sources or moisture related places.

The introduction of moisture in any form can seriously damage the electrical parts of the model that can cause malfunction and premature flight patterns.

### KEEP AWAY FROM HEAT



R/C models are made of some parts plastic.

Make sure to store the model away from head producing appliances such as heaters or stoves. It is best to keep the model indoors in a controlled cool environment with ambient room temperature.

## RADIO TRANSMITTER AND ELECTRONIC EQUIPMENT REQUIRED FOR ASSEMBLY

**CX450 Pro**  
Kit



Transmitter  
(6-channel, helicopter system)



Receiver  
(6-channel, or more)



9g Micro Servo x 3 pcs.  
5g Micro Servo x 1 pcv



Gyro

## TOOL REQUIRED FOR ASSEMBLY

**CX450 Pro**  
Kit



SCISSORS



CUTTER BLADE



LIQUID THREAD LOCK



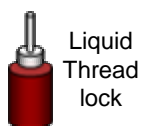
CA GLUE



BALL LINK PLIERS



PITCH GAUGE



Liquid  
Thread  
lock



Cyano  
acrylate  
( CA )

NOTE : The following marks will be seen on the pages of this instruction manual. This designates location and contact points that needs application of adhesive. Liquid thread lock are usually used on metal to metal contact screws normally with fine pitch threading. For Metal to plastic CA can be applied screws designated as force threading or self tapping.

# MAIN ROTOR INSTALLATION



CopterX (CX450PRO-01-02)  
Metal Main Rotor Housing



CopterX (CX450PRO-01-04)  
Metal Flybar Seesaw Holder



CopterX (CX450PRO-01-05)  
Metal Flybar Control Arm Set



CopterX (CX450PRO-01-06)  
Metal Flybar Control Set



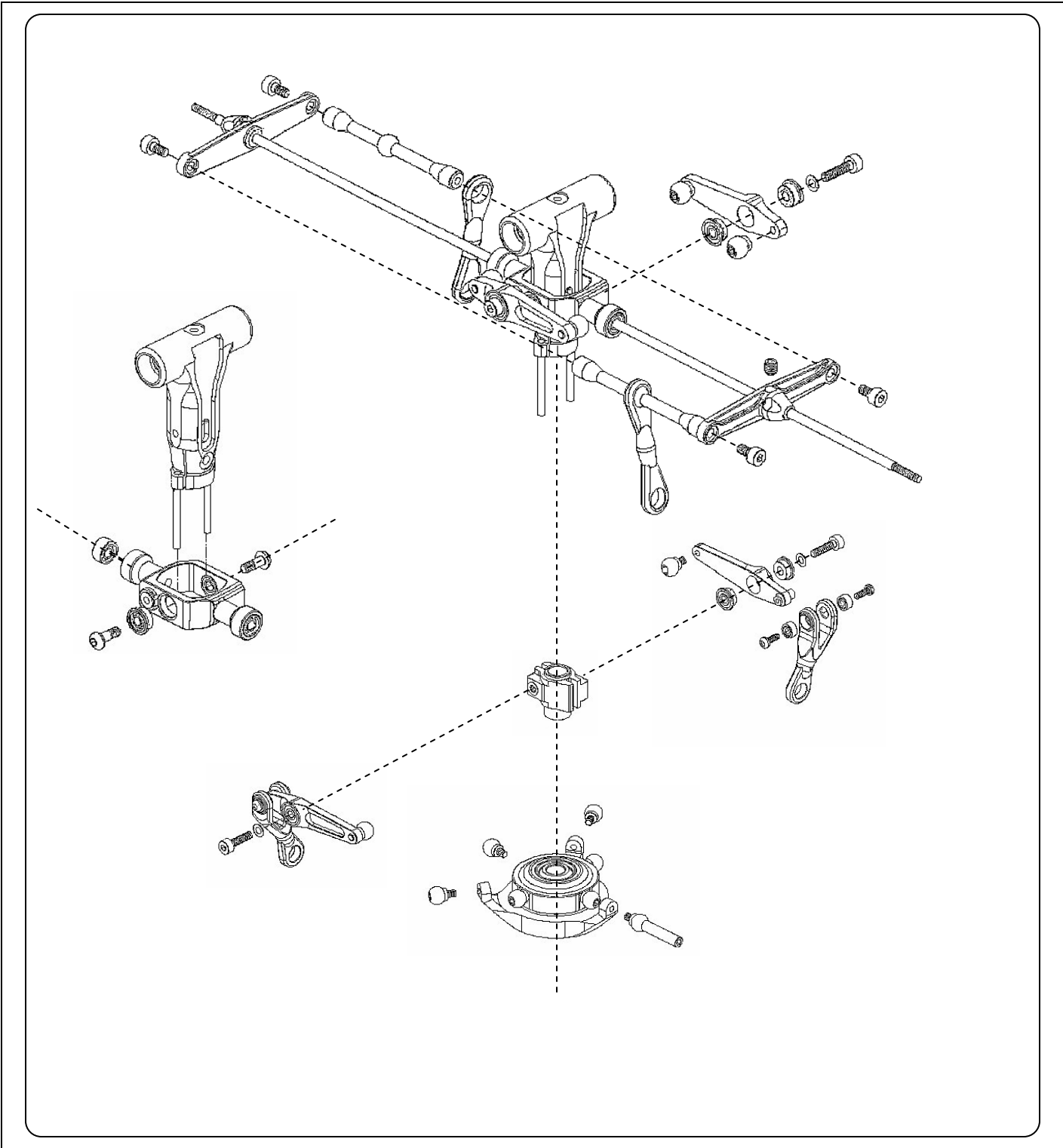
CopterX (CX450PRO-01-07)  
Metal Washout Base



CopterX (CX450PRO-01-08)  
Metal Washout Control Arm



CopterX (CX450PRO-01-09)  
Metal Swashplate



# MAIN ROTOR INSTALLATION



CopterX (CX450PRO-01-10)  
Flybar Rod



CopterX (CX450PRO-01-03)  
Metal Main Rotor Holder



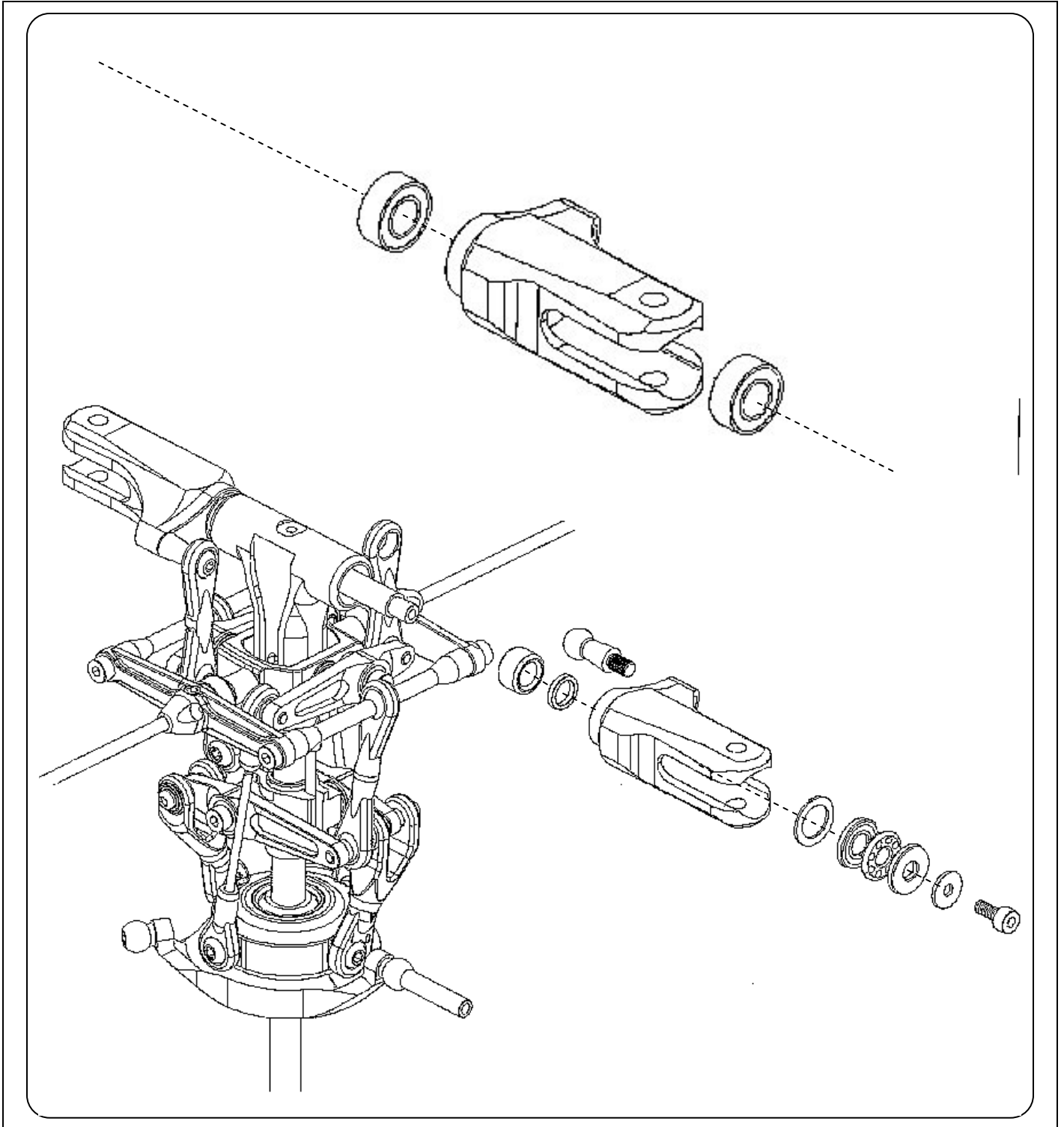
CopterX (CX450PRO-01-12)  
Feathering Shaft



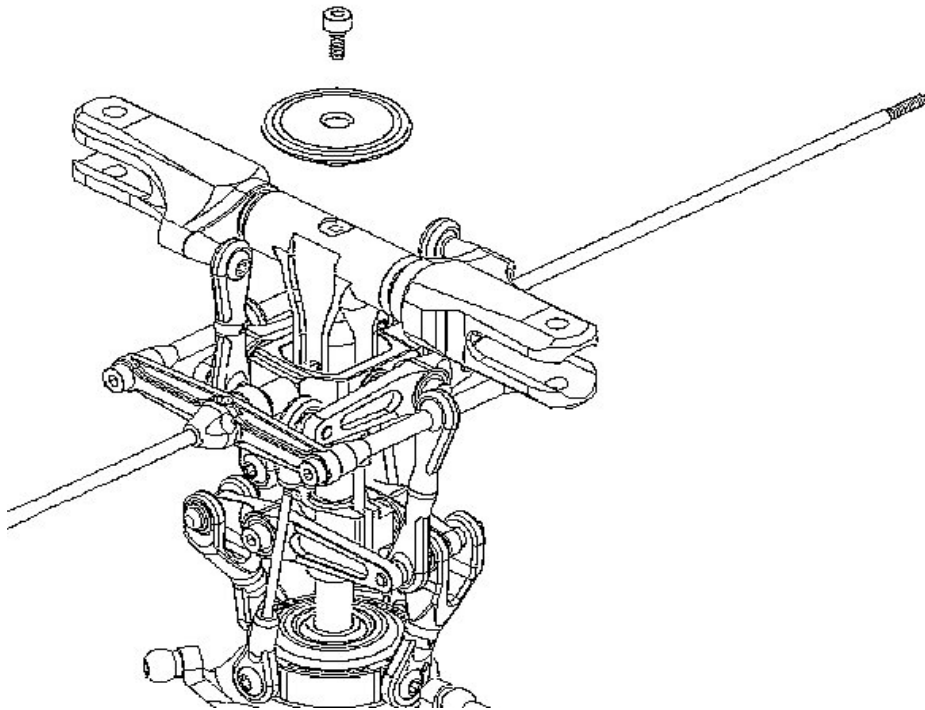
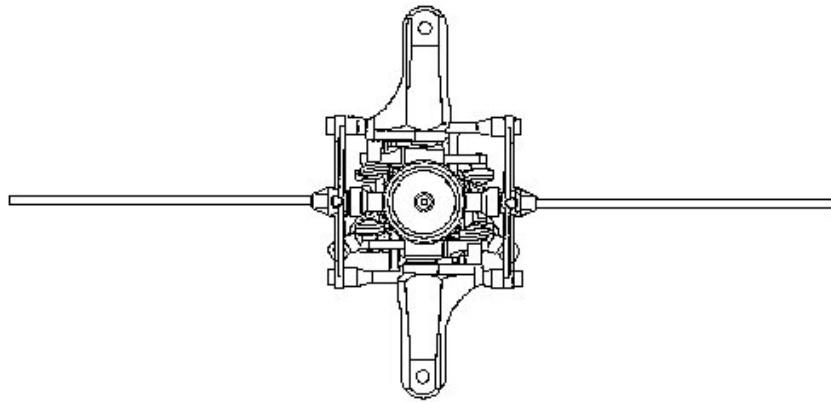
CopterX (CX450PRO-01-13)  
Main Shaft



CopterX (CX450PRO-01-14)  
Linkage Rod



# MAIN ROTOR INSTALLATION



# MAIN FRAME ASSEMBLY

**CX450 Pro**  
Kit



CopterX (CX450PRO-03-01B)  
Carbon Fiber & Metal Main



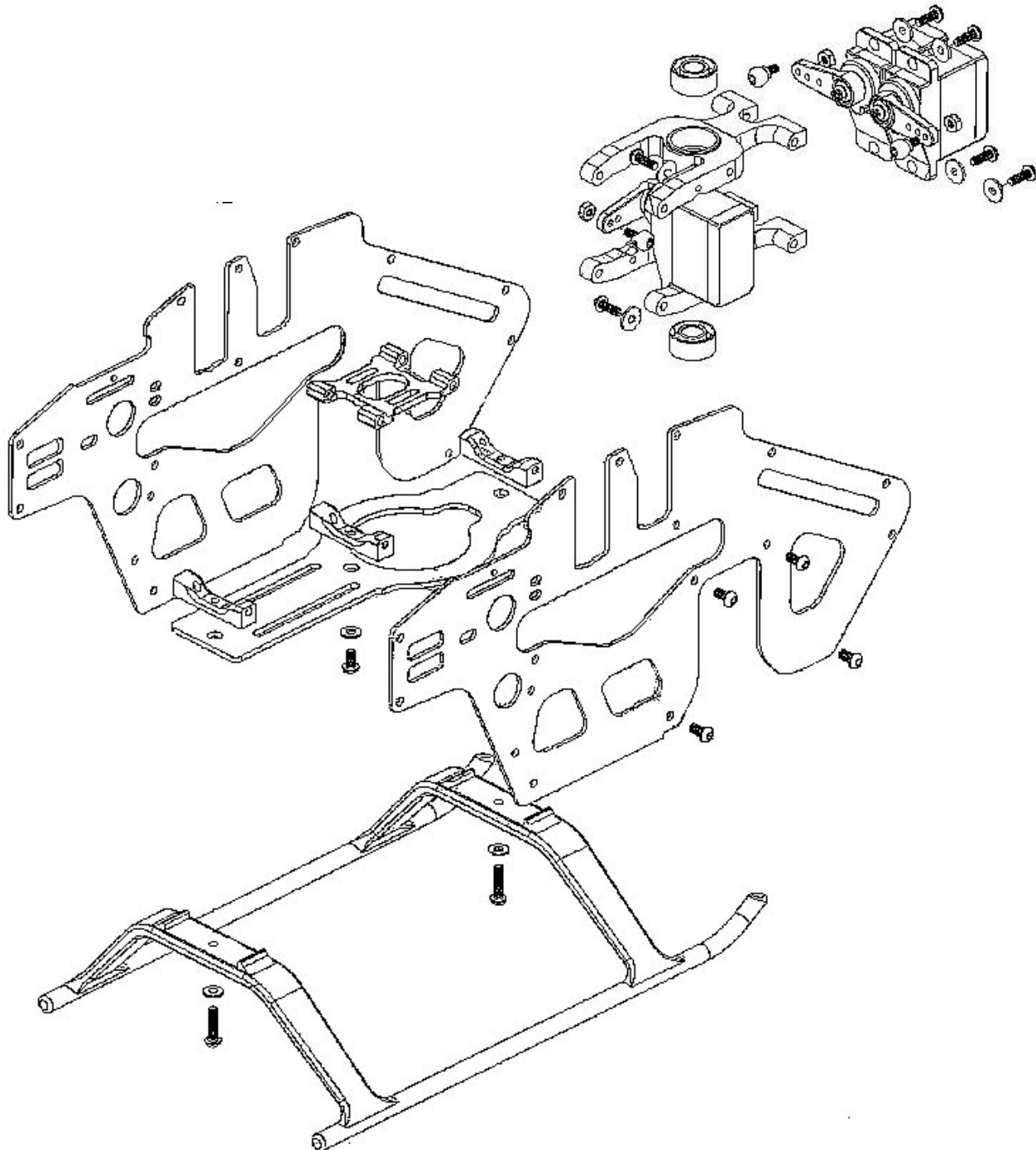
CopterX (CX450PRO-03-03)  
Carbon Fiber Upper Side



CopterX (CX450PRO-03-10)  
Carbon Fiber Bottom Plate



CopterX (CX450PRO-03-06)  
Motor Mount



# MAIN FRAME ASSEMBLY

**CX450 Pro**  
Kit



CopterX (CX450PRO-03-04)  
Main Shaft Holder



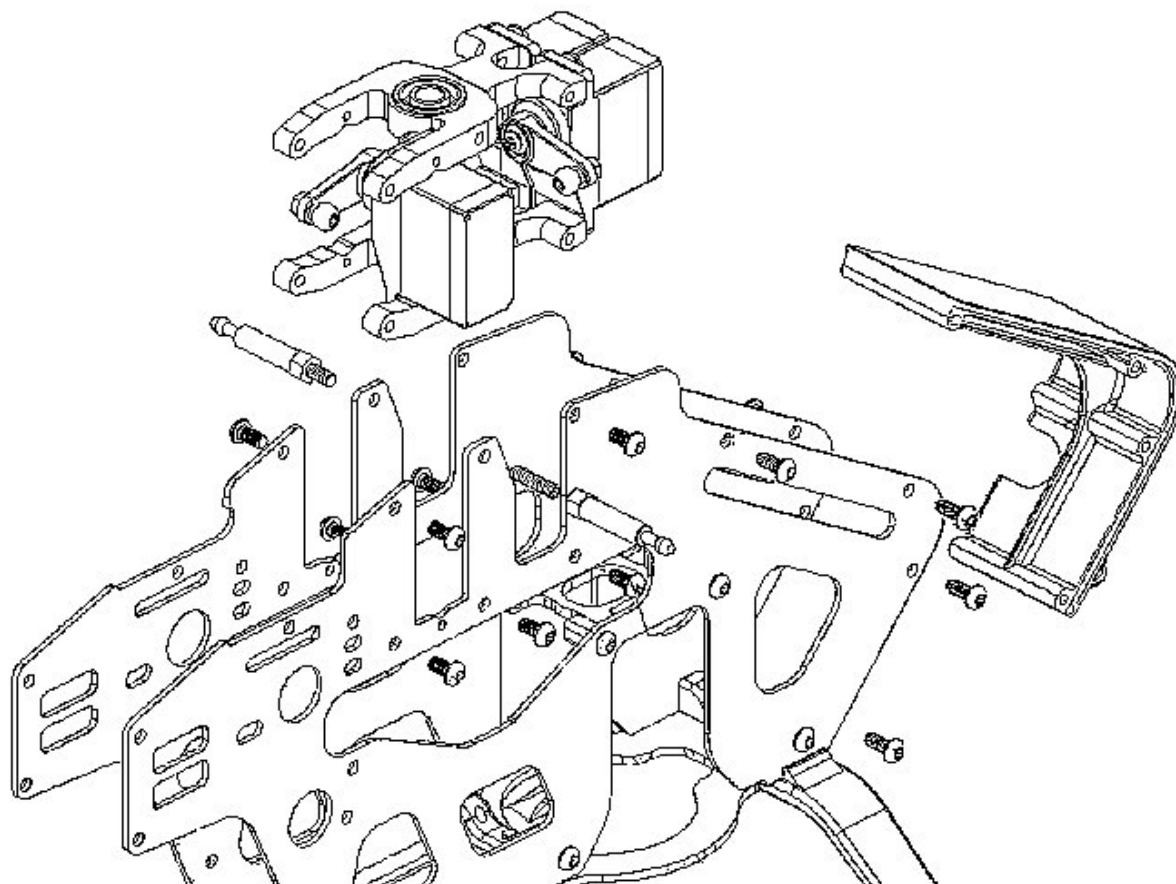
CopterX (CX450PRO-03-05)  
Battery Tray



CopterX (CX450PRO-03-06)  
Motor Mount



CopterX (CX450PRO-03-13)  
Canopy Spinner



# TAIL ASSEMBLY

**CX450 Pro**  
Kit



CopterX (CX450PRO-02-06)  
Metal Tail Rotor Shaft



CopterX (CX450PRO-02-08T)  
Metal Tail Unit



CopterX (CX450PRO-02-10T)  
Tail Assembly Set



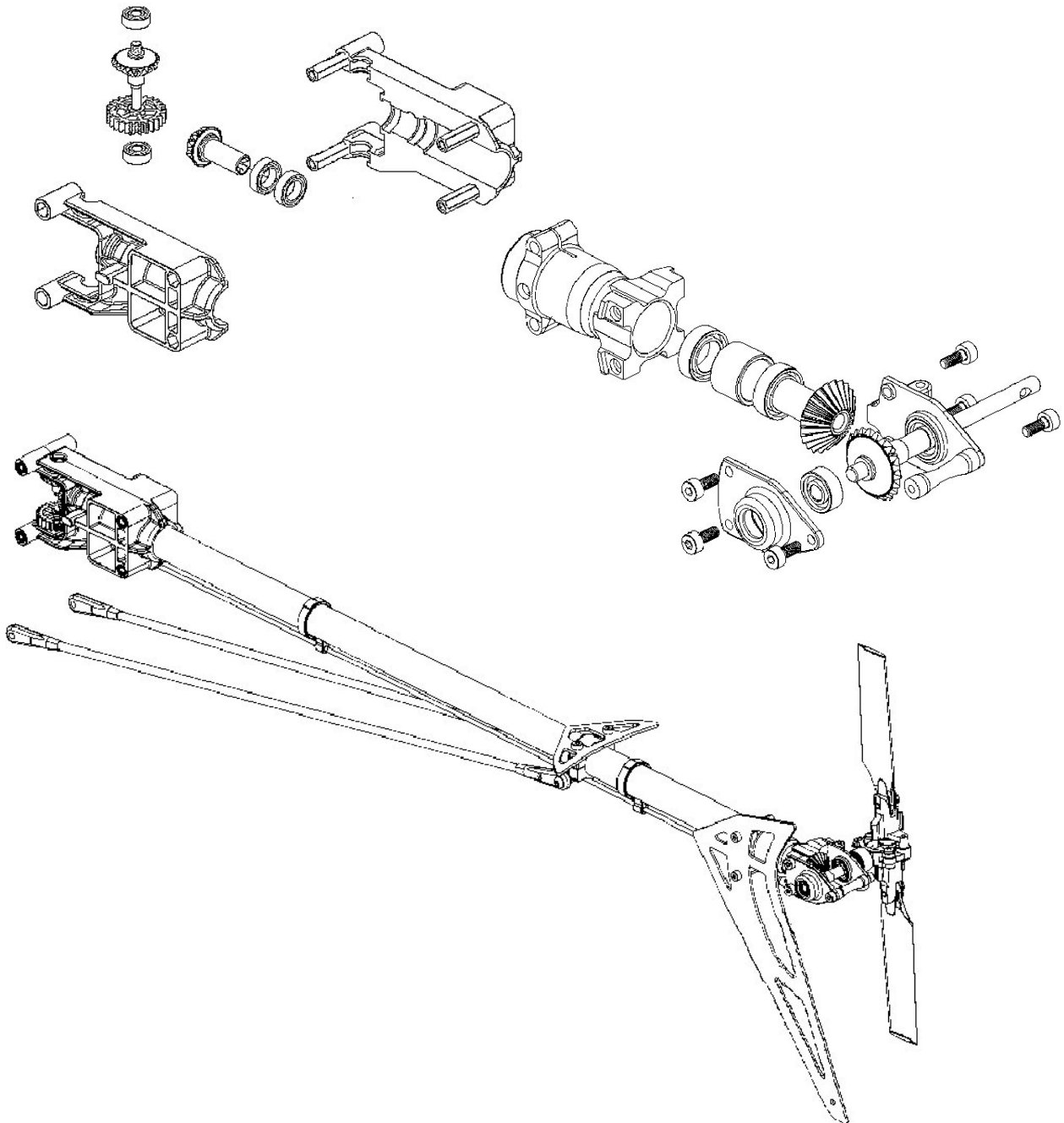
CopterX (CX450PRO-03-16T)  
Tail Boom Holder Assembly



CopterX (CX450PRO-07-01)  
Tail Boom

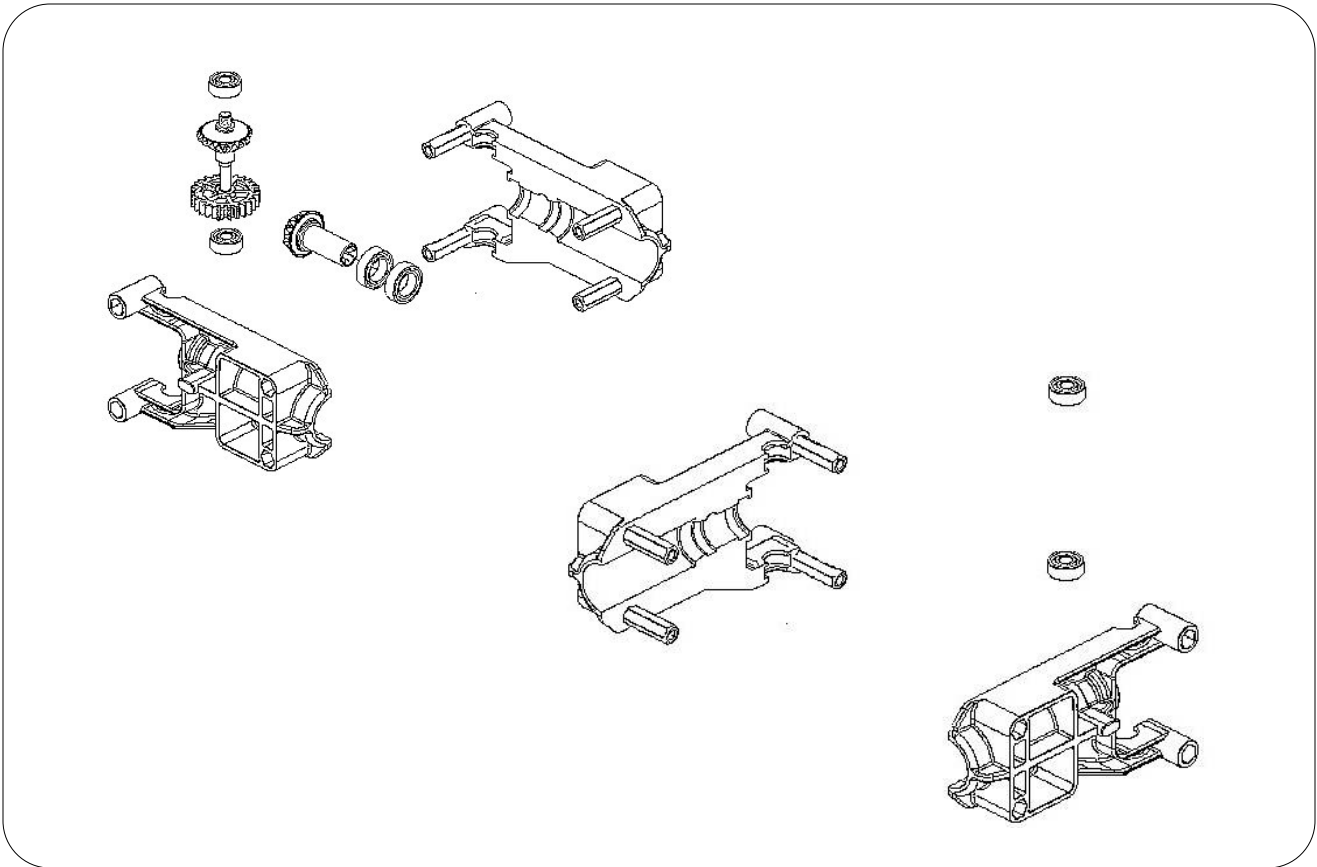
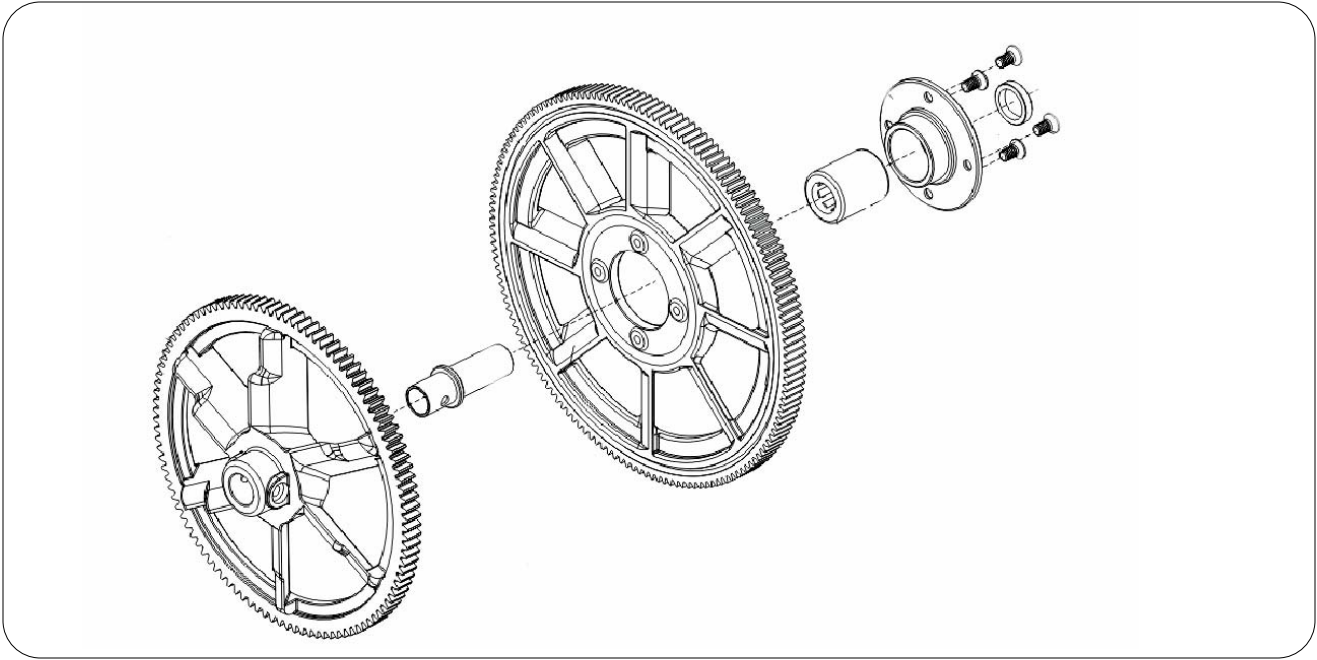


CopterX (CX450PRO-07-02)  
Tail Boom Brace



# GEAR ASSEMBLY

**CX450 Pro**  
Kit



# CopterX

[www.copterx.com](http://www.copterx.com)

This is a product of



**KY Model Company Limited**  
[www.ky-model.com](http://www.ky-model.com)

Copyright © 2008-2010 KY MODEL Company Limited.